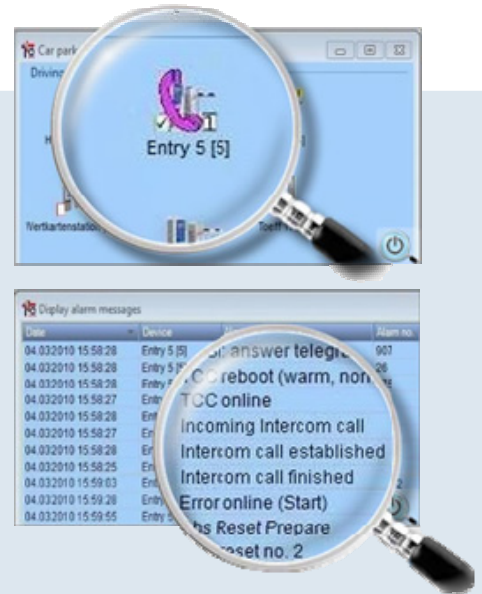


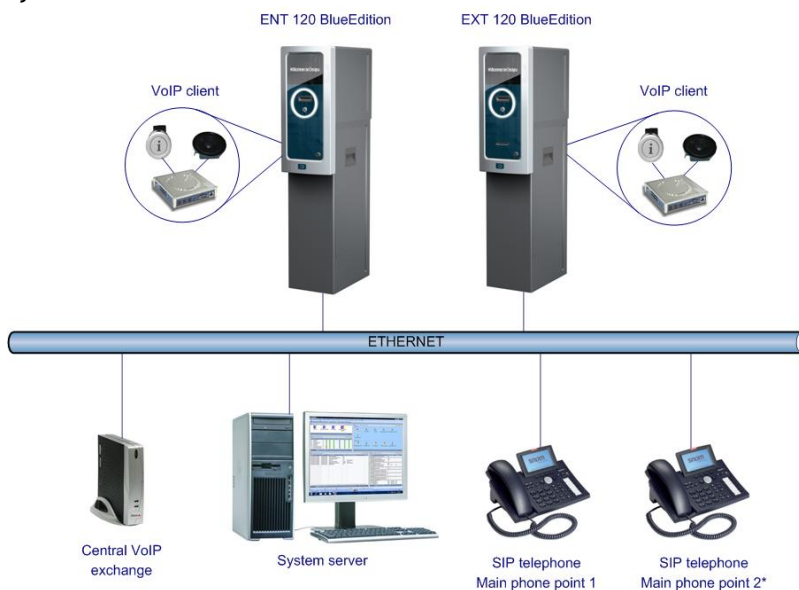
DESIGNA Voice over IP

DESIGNA VoIP - Internet protocol telephony - offers a modern and efficient solution for communication in parking management systems.

- Full integration in PM ABACUS/ SLIMPARK
- No additional wires required between intercom devices and the main phone point
- Graphical display of incoming calls at work stations with WinOperate/ SlimOperate
- Call forwarding to an external number (landline or mobile phone)
- Presentation of all call activities in system messages
- Operation via the main phone point (further main phone points possible)
- SIP compatible
- SIP telephone as the main phone point
- Dry contact to trigger functions (e.g. "open barrier" or "activate lost ticket")
- Web-based evaluation of calls: average response time, average duration of a call, etc.



System overview



* Option

Function

- The intercom devices communicate with the central VoIP exchange via Ethernet.
- Operation occurs via the main phone point.
- A connection is established to the main phone point by pressing the info button at the device. The incoming call is graphically displayed at the device icon and as a system message in WinOperate/ SlimOperate.
- The incoming call can be answered at the main phone point. A speech connection to the device is established and displayed at the device icon.
- A speech connection to the device is terminated via the main phone point.
- All incoming calls and established as well as terminated speech connections are presented in the system messages and saved for further evaluations.

Components

Main phone point "Standard"



- SIP based IP phone
- Two-line display 2x16 characters
- 27 keys, 7 LEDs
- 6 programmable function keys
- Headset connection

Main phone point "Advanced"



- SIP based IP phone
- High-definition graphical display
- Large LED (red) for incoming calls
- 47 keys, 13 LEDs
- 12 programmable function keys
- Headset connection
- Up to 3 extension modules possible

Central VoIP exchange



- VOIP server small, up to 6 devices
- VOIP server medium, up to 10 devices
- VOIP server large, for more than 10 devices (only PM ABACUS)

VoIP client in the device



- Consists of a VoIP module, microphone, loudspeaker and info button
- Communication with the central VoIP exchange via Ethernet

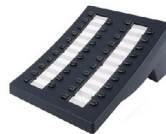
Accessories

Headset



- Headset for the main phone point "Standard"
- Headset for the main phone point "Advanced"

Extension module for the main phone point "Advanced"



- 42 programmable function keys and LEDs
- Up to 3 extension modules can be connected to one main phone point „Advanced“

ISDN Gateway

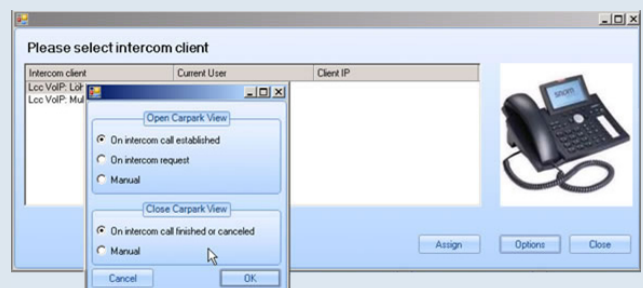


ISDN Gateway

- For forwarding calls to an external phone via the supplied SO Bus

Configuration

- Configuration occurs via the configuration menu in WinOperate/ SlimOperate



System requirements

- PM ABACUS/ SLIMPARK software version x13 or higher
- DESIGNA control device with LCC/ SCC
- Required bandwidth for calls: 128kbps

Options

- Further main phone points
- Call forwarding (version x14 or higher)
- Web-based statistical evaluation

contact

DESIGNA
Verkehrstechnik GmbH
Faluner Weg 3
24109 Kiel/Germany

Tel. +49 431 5336-0
Fax +49 431 5336-260
info@designa.com
designa.com